

State of South Carolina,
Greenville County.

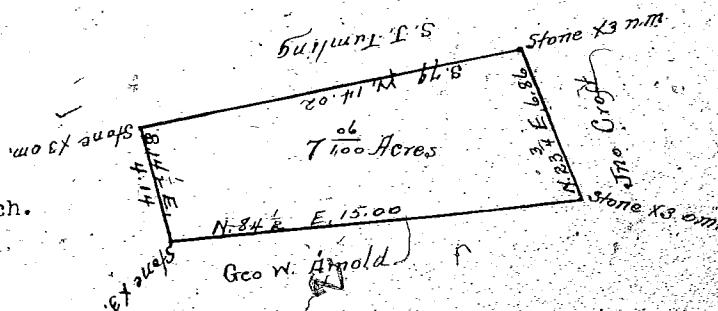
The above plat represents a tract of land sold by W.C. Linley to John Croft; the same being a part of the Tollison Place and contains Seventy-two and 26/100 acres, situate in Oaklawn Township, State and County aforesaid, and having such form, marks and boundings as represented by above plat.

Surveyed and cut off Dec. 3rd, 1913

Wm. F. Lee, Surveyor.

Copied and certified to by James R. Bates, R.M.C. for G. Co., S.C. April 8th, 1919.

112



Scale 5 chs. per inch.

State of South Carolina,
County of Greenville.

The above plat represents a lot of land sold by W.C. Linley to Geo. W. Arnold, being a part of the Tollison Place, and contains 7-06/100 acres, situate in Oaklawn Township, State and County aforesaid, and having such form, marks and boundings as represented by the above plat.

Surveyed and cut off Dec. 3, 1913.

Wm. F. Lee, Surveyor.

Copied and certified to by James R. Bates, R.M.C. for G. Co., S.C. April 8th, 1919.